

FOLLOWING NOTE

CODE:	9050525 (#1681 and #1682)
DESCRIPTION:	G-250 D improvements

THE NOTE IS ABOUT :
Differences between the, current production, G250 v2 machine and the new, prototype, G250D.

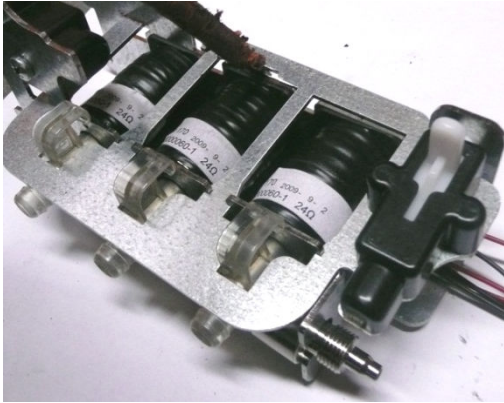
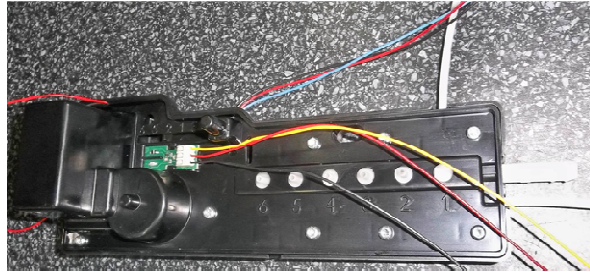
NAME/CODE
DEFINITION:

G-250 D

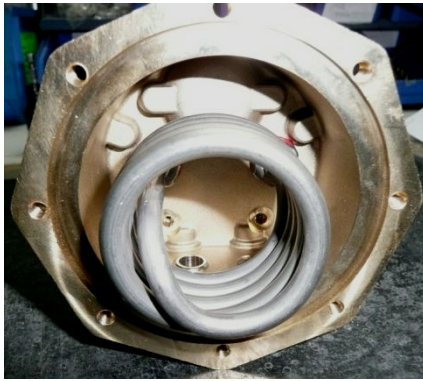
SERIAL NUMBER (YES OR NO)

YES

MODEL	STARTING N°.	DELIVERY DATE:
G-250 D	1681 and 1682 ONLY	10/07/2014

COMMENTS :
G250 V2
ELECTROVALVE DISTRIBUTOR

G250D
MOTORIZED DISTRIBUTOR


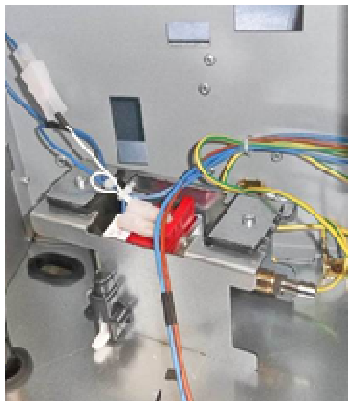
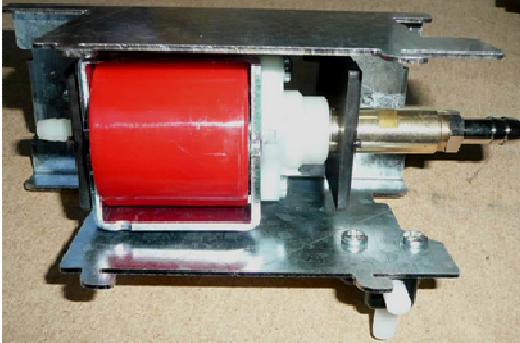
- Electro valves are replaced by a motorized distributor.
- This distributor is managed by photocells that allow knowing, in every moment, its position.
- This system eliminates the uncertainty that comes from the use of coils. With the coils it is not possible to know if they have been correctly activated.

G250 V2
BRASS BOILER

G250D
ALUMINUM BOLIER


- *Aluminum improves heat transmission comparing to brass.*
- *Boiler is easier to clean, having less elements in contact with water.*
- *Better accessibility of boiler elements, making its maintenance easier.*
- *Heating element and NTC temperature sensor are no longer in contact with water.*
- *Reduced number of O-Rings makes water leaks less feasible.*
- *Boiler electro-valves have been removed.*

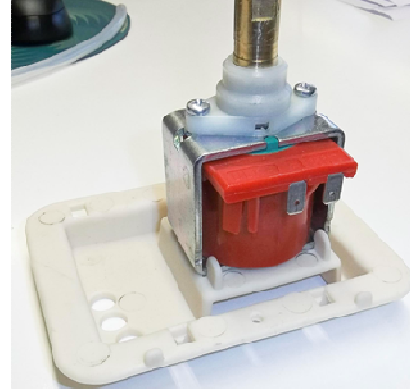
G250 V2

VIBRATING PUMP SUPPORT PLATE



G250D

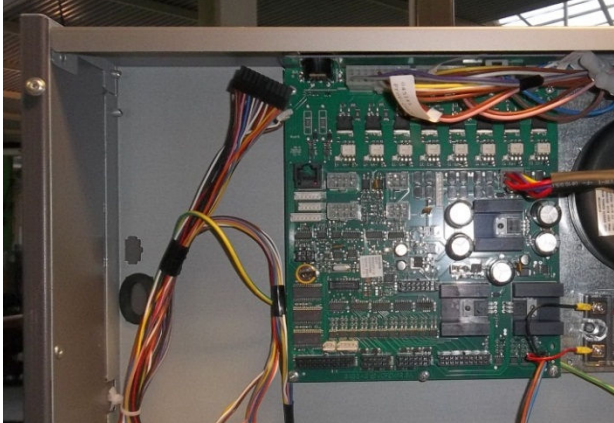
NEW VIBRATING PUMP SUPPORT TRAY



- *Improves easiness of replacing.*
- *Reduces vibrations transmitted to machine.*
- *Reduces the presence of sharp edges in machine.*

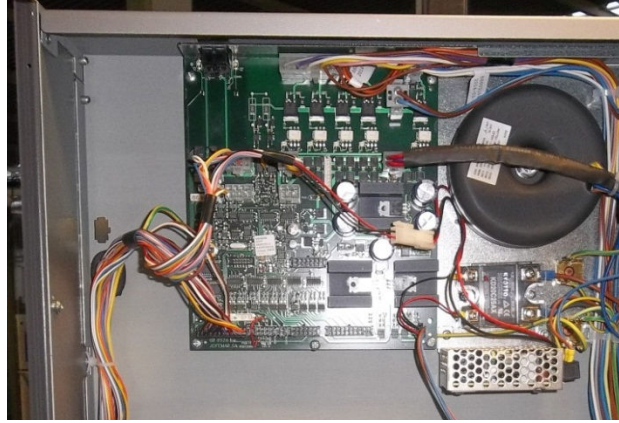
G250 V2

POWER/CONTROL SECTION



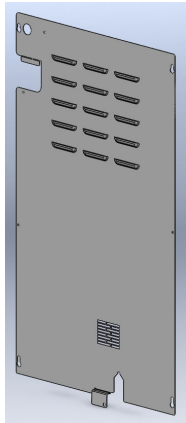
G250D

NEW POWER/CONTROL SECTION



- *New control board to manage the new water distribution system.*
- *Changes from two to one fuse.*
- *Mid-cable connections are replaced by terminal blocks, to improve maintenance work.*

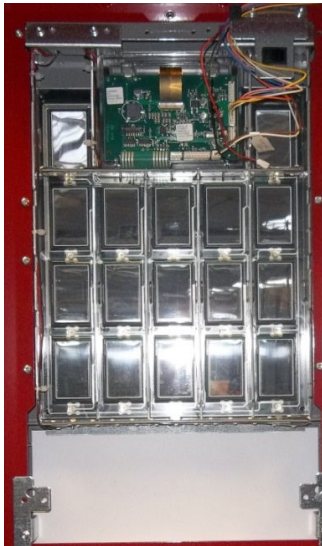
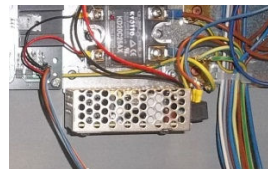
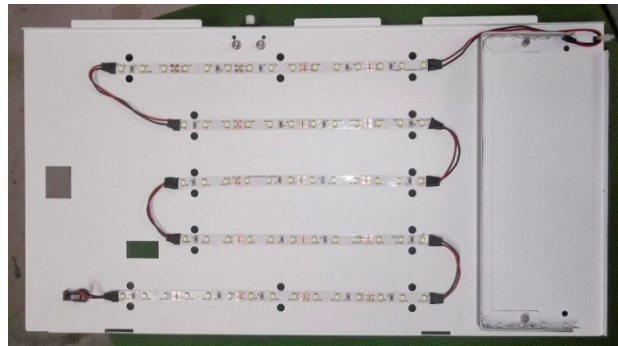
BACK PLATE



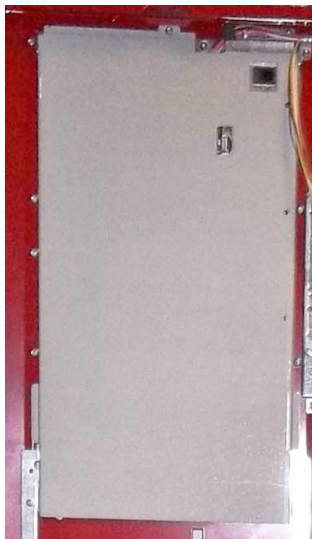
NEW BACK PLATE



- *Rigidity is improved with the lateral bends.*

G250 V2
LABELS/BUTTONS LIGHTING

G250D
NEW LABELS/BUTTONS LIGHTING


- Change from lateral light with 750mm (3.6W) LED to back light with 1450mm (7W) LED.
- Product labels are made of a special High bright material to get much brighter and defined colors.
- Picture is better illuminated.

LED's COVER

NEW LED's COVER


- Cover pivots on one side and is blocked in position by a lock, so no tools are now needed to reach the product labels and LED's.